

PART OF THE S.E. 1/4, SEC. 30, T.6N., R.1W., S.L.B. & M.

WEST OGDEN ADDITION

BLOCKS 1,6 & 7

FOR COMPLETE ENG DATA SEE ORIGINAL DEDICATION PLAT IN BOOK 6, PAGE 18 OF RECORDS.

TAXING UNIT: 25

24TH

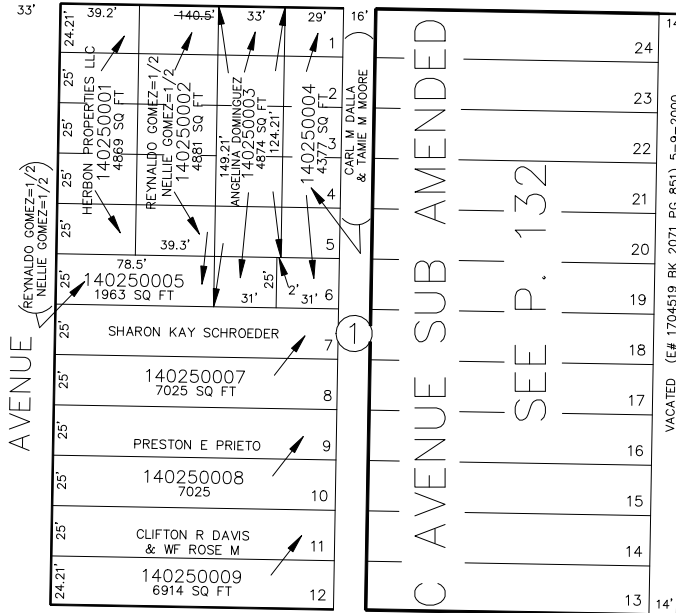
SEE PAGE 17

IN OGDEN CITY

SCALE 1" = 50'

STREET

SEE PAGE 26



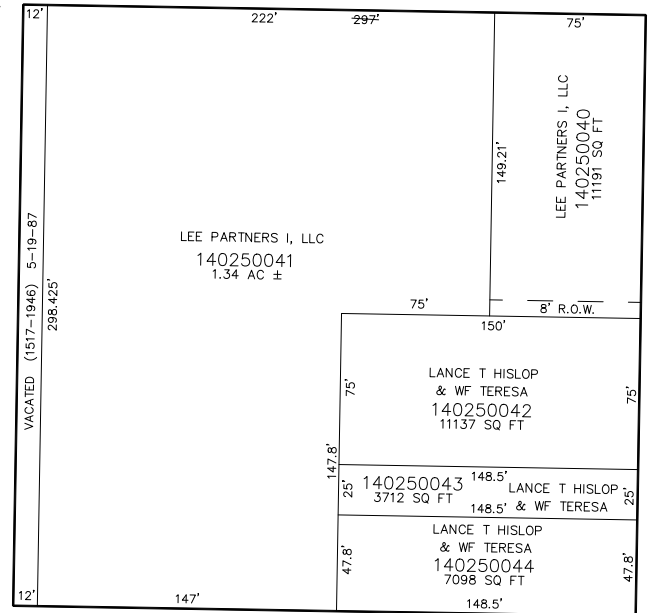
CAPITOL

S 89°02' E

SEE P. 132

AVENUE

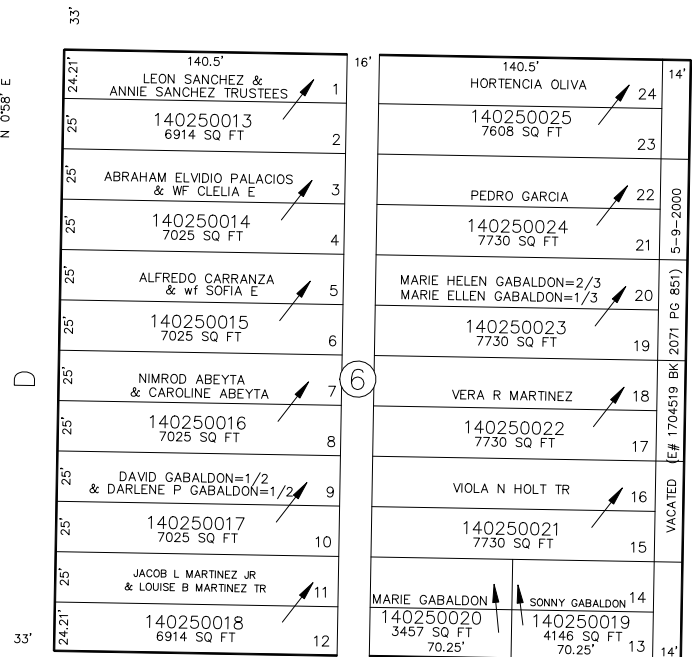
VACATED (E# 1704519 BK 2071 PG 851) 5-9-2000



STREET

AVENUE

SEE PAGE 26



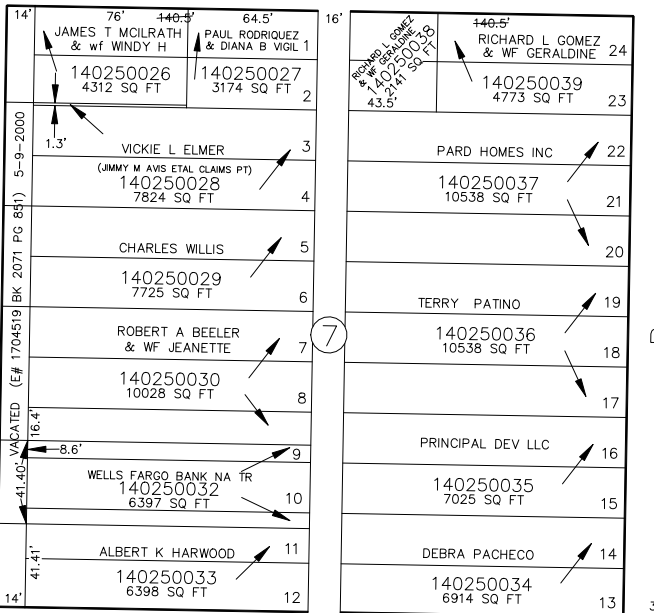
25TH

S 89°02' E

SEE PAGE 27

AVENUE

VACATED (E# 1704519 BK 2071 PG 851) 5-9-2000



STREET

AVENUE